

SOCIAL CAPITAL



ReNew-supported school students connect with the ReNew team for a meaningful exchange on how renewables can advance a better future, Dholera, Gujarat



With hope for a brighter tomorrow in their eyes, students at one of the schools enabled by ReNew's Lighting Lives program shine with promise

MATERIAL TOPICS IMPACTED



DRIVING GREEN TRANSITION WITH PURPOSE AND SOCIAL RESPONSIBILITY

In an increasingly interconnected world, the pursuit of equitable development, social justice, and human well-being has become more urgent than ever, demanding collective action across economies. Aimed at fostering prosperity while safeguarding the planet, the United Nations Sustainable Development Goals (SDGs) provide a global blueprint for parallel advancements in economic growth, social well-being, and environmental sustainability.

India, among other economies, has demonstrated its commitment to the 2030 Agenda for Sustainable Development by aligning its national priorities with the SDGs. To achieve a '**Viksit Bharat**' by 2047, India is proactively embedding the SDGs into its policy frameworks, translating them into transformative flagship programs, and continuously **tracking progress** through the **SDG India Index**. Driven by consistent monitoring, the country is advancing toward an inclusive and sustainable future. According to the **UN's 2025**

Sustainable Development Report, India ranks **99th out of 167 countries** with a score of **67**, marking its first entry into the **top 100** of the **global SDG Index**.

At ReNew, our continuous endeavour to societal development reflects India's evolving vision of social responsibility.

As the country advances toward sustainable economic and inclusive development, our Corporate Social Responsibility (CSR) initiatives have also evolved to support and strengthen the priorities of new India. In our mission to positively impact **2.5 million lives by 2030**, we are striving to shape a future where prosperity and sustainability go hand in hand.

SDGs IMPACTED



KEY HIGHLIGHTS OF FY 2024-25

330,241+

lives positively impacted in FY 2024-25

2,417

volunteering hours

INR 320 million

spent on CSR Activities

11

Indian states positively impacted

1,747

employee volunteers

INR 39 million

targeted CSR investment for the benefit of 6 aspirational districts

GRI INDICATORS

GRI 203: Indirect Economic Impacts
GRI 413: Local Communities

BRSR PRINCIPLES

Principle 8: Businesses should promote inclusive growth and equitable development

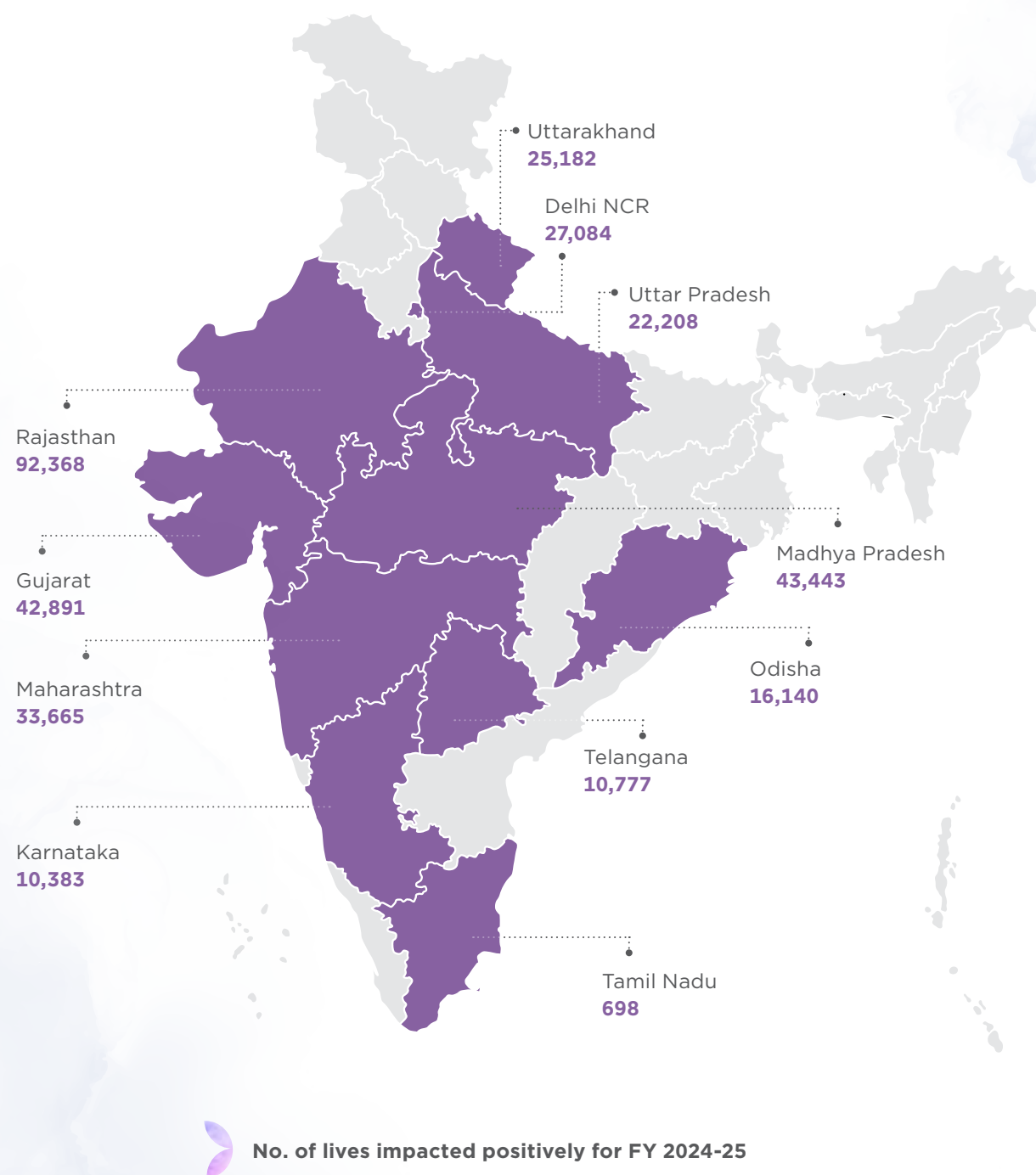


The future in focus, students with ReNew's CSO, Vaishali Nigam Sinha, as Smart Classrooms open new doors to learning and opportunity

ReNew's CSR JOURNEY: PROGRESS THAT MIRRORS THE AMBITIONS OF NEW INDIA

Our CSR journey mirrors the transformational trajectory of India's ongoing development. With each passing year, we have made a greater difference in people's lives through our CSR interventions. Our impact has grown exponentially. From our **humble beginnings in the state of Maharashtra**, benefiting **31,500+ beneficiaries**, to now reaching over **11 states, 740+ villages** and having positively impacted **1.7+ million lives across India** as of **FY 2024-25**. In FY 2024-25 alone, we benefited **330,241+ lives**, including focused efforts in aspirational districts.

Our CSR Impact: Expanding Horizons, Empowering India

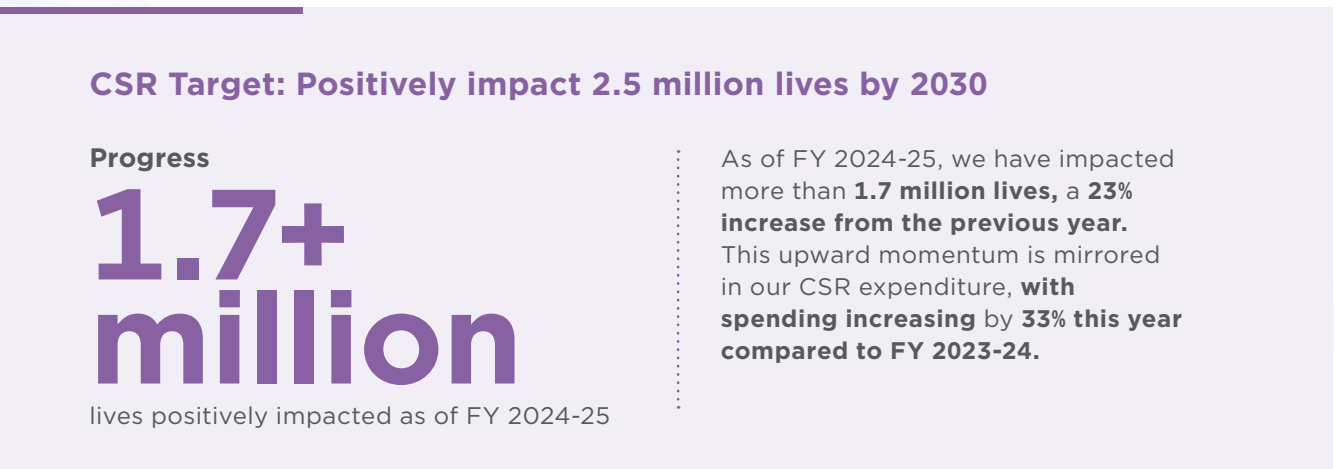


Strategic Vision Powering Impactful Progress

Our approach is **impact-driven**, with each initiative developed on a **need-basis** in close collaboration with local communities. Our CSR interventions are shaped in alignment with India's evolving renewable energy landscape, climate policies, and regulatory frameworks, ensuring our impact remains relevant and resilient. Guided by a strategic vision to **address grassroots challenges**, we are **advancing national priorities, including climate action, clean energy access, green skill development, gender diversity, and community upliftment**.

Throughout our decade-long journey, we have gone beyond implementation and scaled programs across geographies to create **systemic impact, fuel economic growth, generate green jobs, and equip individuals with the skills needed for a sustainable future**. By integrating skill development, economic advancement, and sustainability, we are creating changemakers, strengthening community leadership, and mobilising capital to amplify transformation. **This ensures that our impact is not just immediate but lasting, contributing to India's resilient and inclusive growth story**. We aim to be a driving force in affordable and clean energy, reinforcing India's green energy solutions, and contributing to global sustainable development goals (SDGs).

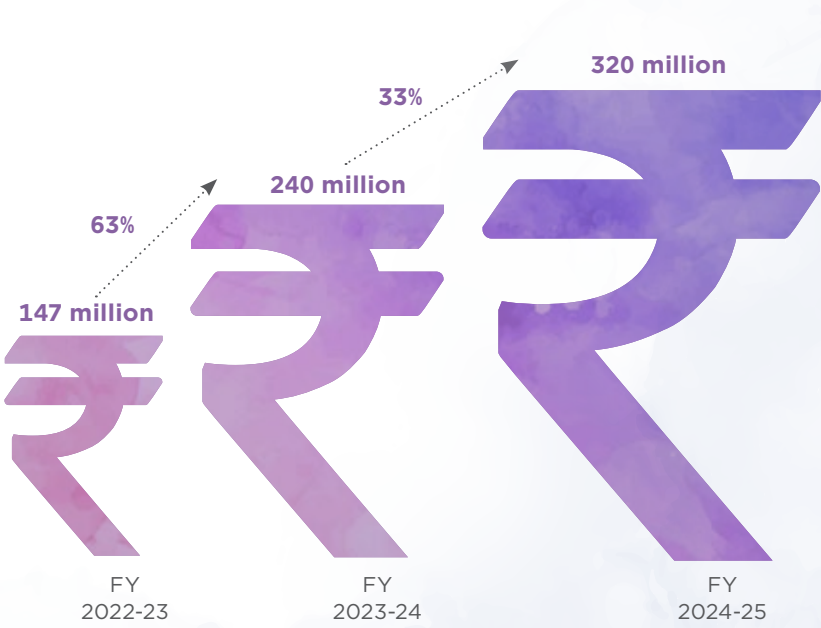
ReNew's PROGRESS AGAINST THE CSR ReSTART TARGET



Our CSR Impact Total lives impacted positively



Our CSR Impact CSR Expenditure (INR)



OUR CSR GOVERNANCE STRUCTURE

Ensuring Transparency, Strengthening Oversight, Driving Impact

Our CSR governance structure is designed to uphold accountability, transparency, and effectiveness in all social responsibility initiatives.



Board of Directors

- The apex authority oversees our CSR strategy and initiatives, while also approving the [CSR policy](#) and budget
- Ensures at least 2% of the average net profit is spent on CSR initiatives
- Oversees effective project execution through annual performance reviews



CSR Committee

- Ensures effective execution and monitoring of CSR strategy
- Meets annually to review performance, approve future agendas, oversee project implementation and evaluate impact assessment



Internal Committee

- The committee meets biannually to conduct periodic reviews, recommend refinements to enhance impact, and facilitate seamless coordination between business operations and CSR initiatives

Project planning and community engagement strategy

We believe meaningful project outcomes begin with listening to and partnering with communities from day one. Our approach prioritises early and transparent communication, involving communities, businesses, and stakeholders in project planning. We implement benefit-sharing mechanisms, address concerns proactively, and build local capacity to ensure social acceptance and environmental responsibility.

By adopting a bottom-up approach, we align initiatives with real socio-economic challenges, creating long-term impact and sustainability through active engagement, need-based interventions, and transparent governance. By fostering transparency, participation, and accountability, we drive inclusive development, ensuring communities thrive through collaborative partnerships and sustainable solutions.

Young minds benefit from seasoned experience: Students from ReNew-powered Sri J.N Vidyamandir school, under the Lighting Lives initiative, interact with ReNew's Board of Directors in Dholera, Gujarat



Stages of Community Engagement

1. Need Assessment

Stakeholder Involved: ReNew Business Team, Local Community, Panchayat

Purpose of Engagement: Conduct need assessment across areas of operations to identify community needs. CSR professionals engage regularly with local communities and their representatives on-site to understand their needs. These insights form the foundation for designing CSR programmes tailored to address the identified priorities.

2. Design and Implementation

Stakeholder Involved: ReNew Foundation, NGOs/Civil Society Organisations (CSO) and other corporations

Purpose of Engagement: Based on key focus areas identified, design interventions in alignment with community needs are developed. More details on our current focus areas as identified through need assessment and related interventions can be found in the Key CSR Interventions section below.

Implementation of programmes directly and indirectly via ReNew foundation/ NGOs and other corporations

3. Programme monitoring

Stakeholder Involved: Operational Site Teams, Community Members, Local Government

Purpose of Engagement: Conduct regular site visits to assess the extent of acceptance and change in the lives of beneficiaries, to report the monthly KPIs.



4. Evaluation

Stakeholder Involved: Local Community, External Agencies, CSR/Internal Committee

Purpose of Engagement: Undertake a comprehensive Social Impact Assessment (SIA) of all long-term projects annually to evaluate their sustained outcomes and effectiveness.

The latest assessment was conducted in FY 2024-25, insights on the same are available below under the Social Impact Assessment section.

5. Reporting

Stakeholder Involved: CSR Committee and Board of Directors

Purpose of Engagement: Report progress to the CSR committee periodically and disclosing through integrated reporting.

6. Grievance Redressal

Stakeholder Involved: Site Operations & Maintenance (O&M) Teams, HSE function

Purpose of Engagement: Employ a well-established stakeholder engagement and grievance redressal mechanism for the entire project lifecycle to engage with the affected communities where we operate.

KEY CSR INTERVENTIONS

Building Strong Communities and a Stronger Nation

Access to Energy and Education

Ensuring energy access and climate education to empower India's next generation of changemakers

- Lighting Lives
- ReNew Young Climate Leadership Curriculum

1



2

Women's Empowerment and Skill Development

Empowering women through skills and inclusion to leapfrog clean energy transition

- Project Surya
- Green Tech Accelerator

3



4

Water Conservation

Combating India's water crisis through community-driven water management

- Community-based Water Management
- Access to Clean Drinking Water

Community Development

Empowering Communities for a Thriving India

- Gift Warmth Campaign
- Rice Millet Challenge
- Community-based Infrastructure Support
- ReNew Scholarship for Exceptional Talent (ReSET)
- Edu Hub



1

ACCESS TO ENERGY AND EDUCATION

India boasts one of the largest youth populations globally, **with over 248 million school-going children, representing immense potential for economic growth and climate action.** However, unlocking this potential requires quality education, which is increasingly shaped by digital infrastructure and reliable electrification.

Over the years, national efforts have significantly improved **electricity access in schools, rising from 53% in FY 2013-14 to 91.8% today.** Yet, disparities persist, particularly in rural areas, where intermittent power supply limits learning opportunities. Through our flagship initiative, **Lighting Lives**, we are bridging

this gap by addressing the challenge of power intermittency, ensuring students receive uninterrupted access to digital learning tools that enrich their educational experience.

Beyond infrastructure, **we are enriching educational experience** by recognising the crucial role of climate education in shaping the next generation of changemakers. Our **ReNew Young Climate Leadership Curriculum (YCLC)** equips students with the knowledge, skills, and awareness needed to become advocates for climate action.



Young Climate Leaders from ReNew's Young Climate Leadership Programme are driving change as Green Ambassadors, passing the baton of hope for a better tomorrow

LIGHTING LIVES

Powering Tomorrow's Leaders with Reliable Energy Access

Key Highlights of FY 2024-25

38,000+
lives impacted

Extended partnership with **HSBC** to electrify 100 additional schools, building on the success of powering 75 schools previously

Partnered with **Vidya Bharati Akhil Bhartiya Shiksha Sansthan** to electrify around **50** needy schools

Targeted development for the most marginalised regions, like the Desert National Park area of Barmer, Rajasthan

SDGs Impacted







Launched in 2018, Lighting Lives is a transformative initiative designed to expand access to quality education for students in every corner of the communities where we operate. The program aims to **achieve last-mile electrification of schools** that have less than three hours of daily electricity access. Through reliable power supply, **we are addressing the challenge of power intermittency**, creating a modern educational environment where students can thrive, ensuring equal learning opportunities for all. Through the **integration of solar grids** into the educational environment, we **are instilling the values of environmental stewardship led by sustainable energy from an early age**, encouraging students to grow into environmentally conscious future leaders.

In FY 2024-25, we installed a total of **702 kW of solar capacity**, resulting in an **estimated 890 tonnes of CO₂ emissions avoidance** which is a tangible step toward reducing carbon footprint and preserving the planet for future generations.

The program generates wide-ranging impacts that extend beyond its immediate objective of school electrification through solar energy solutions. These benefits include:

- The integration of **smart classrooms and ICT labs** has equipped students with essential digital literacy and modern learning tool. In fact, enhanced digital skills and infrastructure have empowered students and by extension, their communities with stronger, more effective communication in a rapidly evolving digital landscape. **63%** students assessed under SIA reported that they feel **more confident in using technology** after establishment of digital labs.¹
- **Continuous cooling and ventilation** supported by consistent power supply has safeguarded students from extreme heat, with **100%** reporting **improved comfort levels**.¹
- **Community development** through **improved learning conditions, increased enrolment**, and **reduced dropout rates**.

¹ Based on Social Impact Assessment, FY 2024-25

Impact Created	FY 2024-25	Cumulative
 Schools & other institutions electrified	92	275
 Computer labs established	6	125
 Smart classes & science labs established	122	147
 Computer trainees trained	130	1,954



ReNew sets up smart classes in Odisha to empower students with digital learning and make them future-ready

Educating women is investing in a stronger future for them, for their communities, and for the nation



CASE STUDY

A BEACON IN THE STORM: HOW RENEWABLE ENERGY LIT UP VADALA GOVERNMENT SCHOOL

Extreme weather events are becoming more frequent and severe, disrupting lives and critical infrastructure. When **Cyclone Biparjoy swept through Kutch, power lines collapsed, leaving villages without electricity and cutting access to communication, medical supplies, and essential services.**

But at Vadala Government School, light still shone. Our **7 kW solar grid system stood resilient providing uninterrupted power even as the storm raged.** Its battery storage transformed the school into a critical community support centre while surrounding areas remained dark.

This simple investment in renewable energy had become a lifeline, proving that sustainability is not just an environmental goal, it is a promise of security and resilience. The experience reinforced a vital truth that clean energy is not only about addressing climate change, it is about protecting communities and building infrastructure that withstands future challenges.

“The solar panel installation in the school proved invaluable. During the cyclone, when the entire village was plunged into darkness, the school remained powered, thanks to its solar infrastructure. It quickly transformed into an emergency charging station, offering a vital lifeline to the community.”

Principal, Government Primary School, Vadala, Kutch, Gujarat



Promoting energy accessibility for a brighter future: A glimpse of ReNew’s solar-powered ZP Primary School in Indapur, Dharashiv (Osmanabad), Maharashtra

ReNew YOUNG CLIMATE LEADERSHIP CURRICULUM (YCLC)

A holistic climate curriculum modelled around the core principles of the Lifestyle for the Environment (LiFE) Movement

SDGs Impacted



With an aim to nurture future leaders capable of championing India’s clean energy efforts, we launched the **Young Climate Leadership Curriculum (YCLC)** in FY 2021-22. YCLC serves as an advocacy program in schools, designed to **ignite passion for environmental responsibility** and inspire students to take **meaningful action** toward the fight against climate change from an early age.




Additionally, it encourages **behavioural shifts** toward more sustainable lifestyles, embedding climate consciousness into daily decision-making.

Offered through a combination of **online and offline methods**, YCLC is currently being implemented across **75 schools through the offline model**, while its **online curriculum has reached 25,000 students across 100 schools**, ensuring that climate education extends far beyond physical classrooms and into communities nationwide.

53% students assessed under SIA, reported **increased understanding about climate change** after the implementation of the YCLC curriculum.

“Seeing the climate awareness banners, we made displayed around the school makes me feel proud. It feels good to know that our efforts are making a difference and encouraging others to protect our environment.”

Student, Government Senior Secondary School, Rasla, Jaisalmer

Impact Created	FY 2024-25	Cumulative
 Schools reached through YCLC digitally	100	5,215
 Schools reached through YCLC physically	15	75
 Students having access to YCLC	22,594	36,978

CASE STUDY

LIGHTING THE WAY: A STUDENT'S JOURNEY FROM AWARENESS TO ACTION

In the heart of Kolayat, Rajasthan, 13-year-old student Gourav Upadhyay and his classmates accepted the litter around them as everyday scenery. YCLC introduced a structured approach to climate education, sparking a **transformative journey from passive acceptance to environmental advocacy at Mahatma Gandhi Rajkiya Vidyalaya.**

Student **Gourav Upadhyay** had **limited exposure to sustainability** before the program. The learnings of YCLC opened his eyes to how everyday human actions, such as improper waste disposal and resource overexploitation, directly contribute to environmental degradation.

Motivated by the 3R framework, Reduce, Reuse, Recycle, Gourav initiated a clean-up drive within the school premises. His leadership encouraged peer participation, transforming individual action into collective effort. Over time, sustainable practices become embedded in the school culture, reinforcing long-term value of environmental responsibility.

Gourav extended his impact beyond school, engaging family and community in actionable changes like proper waste segregation and material reuse. His efforts reflect YCLC's broader objective: cultivating informed citizens capable of driving grassroots change.



With models and crafts, ReNew's Young Climate Leaders are creating experiential and demonstrative ways to learn and spread awareness on climate change



2

WOMEN EMPOWERMENT AND SKILL DEVELOPMENT

Women represent only **11% of India's renewable energy workforce**, far **below the** global average of 32%. However, the push for gender parity is gaining momentum, especially in the clean energy sector, where women are leading advancements in solar, wind, and sustainable technology.

With India's renewable sector projected to generate **1.5 million jobs by 2030**, women have a unique opportunity to drive transformative change. As per a report published in October 2024 by the International Labour Organisation (ILO) and the International Renewable Energy Agency (IRENA), in 2023, **India's solar industry supported an estimated 318,600 jobs**. However, the gender distribution within this workforce remains largely opaque, highlighting the urgent need to promote greater gender diversity, especially in regions where the solar sector is either well-established or rapidly growing.

Addressing gender disparity is essential for achieving India's clean energy goals. Through **skill development initiatives**, we equip women with **future-ready expertise**, across the value chain, from ground operations to leadership and entrepreneurship. Our CSR interventions ensure women become key architects of a greener, more inclusive energy future¹.

¹ Based on Social Impact Assessment, FY 2024-25

PROJECT SURYA

Empowering female saltpan workers with renewable energy expertise


We believe a just energy transition must empower those at the grassroots. Through Project Surya, we **transform female saltpan workers in the Little Rann of Kutch into skilled renewable energy technicians**, equipping them to install and maintain solar infrastructure while generating stable incomes.

Launched in 2022, the programme has **successfully transformed the lives of 575 women to date**. These women, who previously faced financial insecurity from traditional labor, now lead India's clean energy transition, actively contributing to climate action while securing better futures for themselves and their families.

- **78% of women** assessed under SIA **reported a significant rise in their monthly income**, thus improved financial stability, following job placements.
- At the same time, **40% expressed a strong interest in leveraging renewable energy** through home-based installations, demonstrating both awareness and aspiration for sustainable living.



A proud milestone for ReNew and Project Surya trainees, certified and empowered to explore brighter livelihood avenues

Impact Created	FY 2024-25	Cumulative
 Women Solar Technicians trained	320	575

Key Highlights of FY 2024-25

We have expanded our program by partnering with IIT (ISM) Dhanbad to train and upskill **350+** women coal mine workers in the renewable energy sector, equipping them with solar technology skills for a sustainable career.

SDGs Impacted



It gives me great pride to witness IIT(ISM) Dhanbad’s key role in implementing Project ReNew Surya, ReNew’s pioneering initiative of empowering women from coal mining communities through green energy skills. As the implementing partner, we work closely with ReNew to advance inclusive and sustainable development. The women-centric solar energy training under the Suryamitra framework, supported by the Skill Council for Green Jobs (SCGJ), reflects a robust convergence of social responsibility, technical excellence, and grassroots impact.”

Prof. Sukumar Mishra
Director, Indian Institute of Technology (Indian School of Mines), Dhanbad



Project Surya expands to Dhanbad in partnership with IIT Dhanbad, equipping women in coal mines with new skills for better job opportunities. ReNew team joined by Prof. Sukamar Mishra and CSO Vaishali Nigam Sinha

CASE STUDY

EMPOWERING WOMEN IN CLEAN ENERGY: SHAYRA LANGHA’S JOURNEY

Shayra Langha, a 22-year-old woman from Santalpur village, Gujarat **exemplifies transformative change through skill development**. Born into a farming family, she lost her father, the sole breadwinner, at a young age. Determined to support her family, she pursued education but faced limited job opportunities due to a lack of technical skills.

Through **Project Surya**, Shayra excelled in panel installation, electrical systems, and safety protocols, **securing a job at our Solar Module Manufacturing plant in Dholera in December 2024**.

Now financially independent, Shayra is building a new home and inspiring other young women to pursue education and careers in clean energy. We take pride in empowering woman like Shayra across India, by providing access to skills, opportunities, and financial independence, **driving lasting change in communities**. By fostering such transformative pathways, we help build **self-reliant community ecosystems** that continue to **thrive sustainably** even after individual projects conclude.

Her transformation reflects broader program impact as many women have gained greater control over their lives. **100% of participants assessed under SIA, reported feeling empowered**, with their voices now heard in household financial decisions. Additionally, **75% of women experienced increased agency in pivotal life choices**, including decisions about marriage and childbearing, driven by their newfound economic independence.



Under Project Surya, beneficiaries experience solar operations firsthand



30% of the cohort comprising women-led startups"

Green Tech Accelerator

Fueling startups with funding, mentoring and market access for a sustainable future

SDGs Impacted




Women entrepreneurs supported
30%



India's clean energy transformation requires not just technology, but the right entrepreneurs to drive it forward. We are fueling the next generation of visionary startups, offering seed funding, expert mentorship, and market access to scale renewable energy solutions and cutting-edge climate technologies. More than just funding, we provide a launchpad for ideas that can shape India's clean energy future.

At our core, we champion gender inclusivity, with 30% of the cohort comprising women-led startups, challenging norms, driving innovation, and redefining leadership in the green economy. By fostering innovation and an entrepreneurial ecosystem, we aim at unlocking opportunities for climate-focused startups to accelerate India's journey toward a Net Zero future, ensuring that the clean energy transition is not just rapid, but also equitable and transformative.

By strengthening grassroots entrepreneurship and fostering economic inclusion, ReNew empowers women to become active participants in India's growth story.

Impact Created	FY 2024-25	Cumulative
 Total number of entrepreneurs supported	8	25



3 WATER CONSERVATION

Water scarcity remains one of India's most critical challenges, with nearly 600 million people facing high to extreme water stress, adversely impacting livelihoods, agriculture, and economic stability. As India's population expands and climate variability intensifies, securing sustainable water resources is vital for national resilience and long-term growth. We are at the forefront of addressing this crisis, particularly in the severely affected states of Rajasthan and Maharashtra. Through community-based water management and lake desiltation efforts, we are revitalising critical water sources, ensuring improved availability for households, agriculture, and ecosystems.

livelihoods, farmers and families face an uncertain future. Drying lands, withering crops, and **unreliable water sources** have long plagued communities, making **access to clean water a daily struggle**. Recognising this urgent need, we have been strengthening community-led sustainability efforts through a range of water conservation initiatives.

To provide reliable drinking water to marginalised communities, we have **constructed** taankas, which are **traditional rainwater harvesting structures** that allow families to store and access clean water year-round. Additionally, our **installation of** bio-sand filters has helped ensure **safe drinking water** while easing the burden on **women and adolescent girls**, who previously had to walk long distances to fetch water.

COMMUNITY-BASED WATER MANAGEMENT

Ensuring Access to Clean Drinking Water

SDGs Impacted

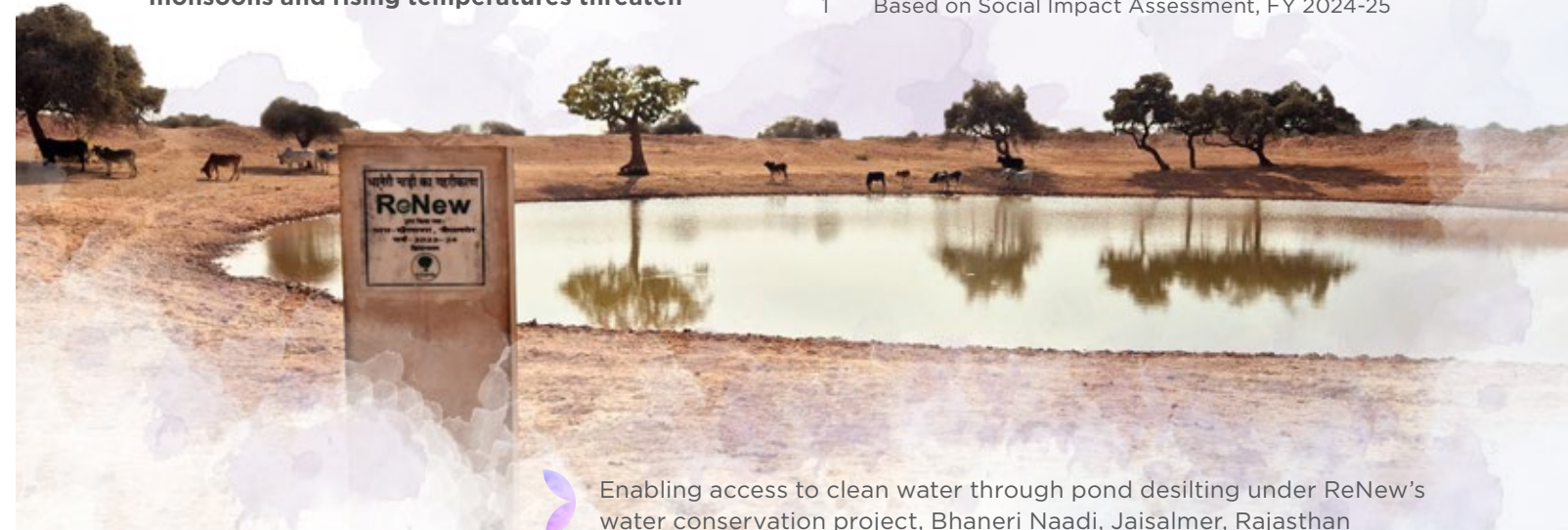


In the arid landscapes of Rajasthan, where erratic monsoons and rising temperatures threaten





74% of primary respondents assessed under SIA, reported **improved access to clean water**, demonstrating how taankas and bio-sand filters have transformed daily life by providing up to **20,000 liters of clean, potable water and reducing the burden on families**¹.

Our commitment to water sustainability goes beyond individual households, we have embarked on **reviving vital water bodies** through **lake desiltation projects**. Across **Jaisalmer, Jodhpur and Barmer**,

¹ Based on Social Impact Assessment, FY 2024-25



more than **12,000 individuals now have consistent access to water**, with revived lakes acting as natural groundwater recharge zones, strengthening communities against future droughts. Scaling up these efforts, we have launched an ambitious project to make **50 villages water positive** in the **next three years**, ensuring long-term resilience in the drought-prone regions of western Rajasthan. Through these interventions, we are not only addressing the immediate water crisis but also laying the foundation for sustainable development, proving that when communities unite around conservation, water security transforms from a challenge into an opportunity for growth.

Impact Created	FY 2024-25	Cumulative
 Drinking water units installed	118	241
 Taankas constructed	60	283
 Lakes de-silted	6	28
 Bio-sand filters distributed	60	213

Key Highlights of FY 2024-25

32,581 lives

positively impacted through the program

“

We no longer worry about running out of water, and my wife does not have to walk for hours to collect it. The taanka has changed our daily lives, and the filter gives us confidence about our health with better access to water, I’ve saved ₹12,000 this year and improved our financial stability.”

Buta Ram, Beneficiary of: Taanka (Rainwater Harvesting Structure) and Biosand filter¹

¹ Based on Social Impact Assessment, FY 2024-25

CASE STUDY

FROM STRUGGLE TO STRENGTH: KEKU DEVI'S JOURNEY TO WATER SECURITY AND EMPOWERMENT

In many rural areas, women and girls bear the burden of water scarcity, forcing them to spend hours collecting water instead of attending school or earning an income, trapping families in poverty. This was **Keku Devi’s** reality in Jaisalmer, Rajasthan. **Without a taanka, her family struggled for water. Her daughters skipped school to help fetch water**, while income opportunities remained out of reach.

Recognising this burden, we supported the installation of a taanka at her home. The system now stores three months of rainwater, significantly easing the physical and financial strain. **The family now saves ₹10,000 annually which they reinvested in livestock, for stable income.** Freed from water collection, the women began daily wage labor, strengthening their financial resilience further.

Hence, a simple water solution hence transformed not just daily routines, but opened doors to education, income, and a brighter future.



Constant water supply has improved lives, Keku Devi, a Taanka beneficiary in Jaisalmer, Rajasthan



4

COMMUNITY DEVELOPMENT

In India, community development plays a crucial role in fostering inclusive growth, addressing social inequalities, and driving economic empowerment. With **over 65% of the population residing in rural areas**, initiatives that enhance **education, healthcare, livelihoods, and infrastructure are essential for sustainable progress**. At ReNew, we engage deeply with local communities to deliver targeted CSR initiatives that address real socio-economic challenges and drive sustainable development.

GIFT WARMTH CAMPAIGN

10 Years of Warmth & Hope

SDG Impacted



For the past ten years, our Gift Warmth campaign has been a source of comfort for marginalised communities, ensuring that no one is left vulnerable during the harsh winter months. With limited shelter and resources, survival becomes a daily challenge, but through this initiative, we have provided protection and relief to those who need it most.

Our employees have led distribution drives across multiple regions, working tirelessly over the three-month campaign period to maximise reach and impact. **Their dedication has helped us fulfill our commitment to distribute 1 million blankets, positively impacting 1 million lives and reinforcing our commitment to social welfare.**

As we celebrate a decade of impact, the Gift Warmth campaign stands as a testament to our collective compassion, proving that small actions can bring lasting change. With every blanket given, we are providing warmth while safeguarding communities and strengthening resilience.

Impact Created	FY 2024-25	Cumulative
 Blankets distributed	170,000	1,006,180

Key Highlights of FY 2024-25

Completed Landmark

10th Edition of Gift Warmth Campaign

with Distribution of

1 million Blankets

“

There’s profound fulfillment in making a tangible difference in people’s lives, and ReNew’s Gift Warmth Campaign enables me to create impact firsthand in the most meaningful way. One particularly moving moment was encountering individuals sleeping on the footpaths of New Delhi, shivering beneath thin coverings. Offering them warm blankets was a powerful reminder of the positive impact we can make together as a community.”

Johny Khore, AGM, Design, Solar Utility Scale



As part of our ‘Gift Warmth’ initiative, blankets were distributed to those in need in the presence of Hon’ble CM of Uttarakhand Shri Pushkar Singh Dhami

RICE & MILLET CHALLENGE

Combating Hunger by Promoting Millet as a Climate-resilient Staple

SDG Impacted





Hunger should never stand in the way of opportunity. Recognising that access to nutritious food builds stronger, more resilient communities, we transformed **our longstanding Rice Bucket Challenge (with 143,689 kgs of rice distributed till FY 2023-24)** into the **Rice & Millet Challenge**, aligning with **India’s focus on millet as a sustainable, climate-resilient superfood**.

In support of the **National Millet Mission**, we ensure communities receive essential food supplies

while benefiting from the long-term health advantages of millets. Our **employees drive this mission** through donations, distribution drives and direct engagement. They **pledge a portion of their income**, and **we match their contributions**, multiplying the impact.

Beyond financial aid, we participate in **on-ground efforts**, building **stronger community connections** and reinforcing our commitment to **social responsibility**. Through **collective action**, we tackle **food insecurity while championing India’s millet revolution**, and **empowering communities** with **nutrient-rich staples** for a **healthier, sustainable future**.

Impact Created		FY 2024-25
	Number of Meals Supported	185,474
	Number of Students Benefited	800

Key Highlights of FY 2024-25

800 children

nourished, in collaboration with the Akshaya Patra Foundation

ReNew employees serve meals to school children under the Rice & Millet Challenge, promoting nutrition and health



Participating in the Rice and Millet Challenge was deeply moving. Seeing the hope in children’s eyes as they received a nutritious meal reminded me that society truly cares. The camaraderie among colleagues and the impact we created fostered a real sense of community. I encourage everyone to support causes that resonate, it is both rewarding and meaningful.”

Col. Harendra Chauhan, Assistant Vice President, Administration and Security



As part of our Rice & Millet Bucket Challenge, employees volunteered to distribute essentials to the needy, supporting the vision of nutritious meals for all, in line with Poshan Abhiyaan and the International Year of Millets

COMMUNITY-BASED INFRASTRUCTURE SUPPORT

Building Resilient Communities

SDG Impacted



Our approach, focuses on long-term, community-driven solutions that enhance livelihoods and well-being. Through our Infrastructure Support Initiatives, we address critical needs in the areas of education, healthcare, infrastructure development, and electrification, ensuring that communities have access to essential resources. Our efforts reinforce resilience and promote equitable access to essential services across multiple sectors.

Table summarising our CSR initiatives across key categories, including activities, impact locations, and beneficiaries:

Category	Key CSR Activities	Impact Created		Outcomes
		FY 2024-25	Cumulative	
Educational Facilities	Construction of school infrastructure including furniture, computer/ STEM labs, and smart classrooms to enhance learning environments.	75	114	<ul style="list-style-type: none">Higher enrollment ratesBetter attendanceEnhanced learning for 13,200+ people
Community Centres	Development of community centres, sheds, pathways, commuter booths, and provision of shared area furnishings to strengthen social infrastructure	3	7	<ul style="list-style-type: none">Improved quality of life, benefiting 2,800+ peopleEnhanced social engagement
Drinking Water Facilities	Installation of drinking water pipelines to ensure reliable access to clean water for communities.	118	123	<ul style="list-style-type: none">Clean water access for 18,000+ peopleReduced health risks
Access to Energy	Installation of solar streetlights and rooftop solar systems for Primary Health Centres (PHC) to improve energy access	899	1,775	<ul style="list-style-type: none">Lighting for 48,600+ peopleUninterrupted power for healthcare
Sanitation Infrastructure	Construction of toilets for schools and hospitals to improve sanitation facilities in public institutions	31	54	<ul style="list-style-type: none">Better hygiene standards, benefiting 1,200+ peopleImproved health outcomesEnhanced dignity in public institutions



Building pathways to improve infrastructure and community comfort around our sites, Uttarakhand

EDU HUB

Building Skills, Expanding Opportunities

SDG Impacted



Edu Hub is a community-driven education centre, that equips rural populations through tailored capacity-building programs. Through collaborations with local experts and government agencies, we empower individuals with practical skills and improved socio-economic opportunities.

Edu Hub fosters engagement and collaboration, nurturing continuous development. Our **Paniyara centre in Varanasi, Uttar Pradesh**, has become a thriving hub driving computer literacy for youth and women, agricultural workshops on government schemes and skill-building programs.

ReNew SCHOLARSHIP FOR EXCEPTIONAL TALENT (ReSET)

Unlocking Talent, Transforming Futures

SDG Impacted



The program is dedicated to identifying and supporting young talents from underprivileged backgrounds, providing them with opportunities to develop their skills and pursue their ambitions in sports. A key component of the program is squash training, which has enabled underprivileged youth to showcase their abilities in the sport. The initiative continues to expand its reach, enabling more young athletes to realise their potential and excel in competitive sports. To date, around 50+ squash trainees from underprivileged backgrounds have been supported through this program.

Key Highlights of FY 2024-25

ReSET in Action,
Karan's Global Debut
at the **World Squash Junior Championship**

Karan, our distinguished ReSET candidate, is set to represent India at the World Squash Junior Championship in Egypt this July 2025. His selection marks more than personal achievement. It exemplifies the ReSET program's commitment to nurturing world-class talent fueled by perseverance, passion, and purpose, reinstating our vision of **positioning India's next generation on the global stage.**



ReNew's ReSET champion Karan is ready to shine at the Junior World Squash Championship and make the nation proud

EMPLOYEE VOLUNTEERISM

Employees in Action, Communities in Focus

Beyond traditional corporate responsibility, our CSR team designs interventions that solve real-world problems. We do not just encourage participation, we empower our employees with voluntary leave, giving them the time and opportunity to connect with communities, drive grassroots change, and

create meaningful impact. Through strategic planning, employee engagement and strong partnerships, our CSR efforts are not just initiatives, they are movements that create enduring change for people and the planet.

Impact Created

FY 2024-25



GRIEVANCE REDRESSAL, REPORTING, AND MONITORING

We have established a **Grievance Redressal Mechanism** to address concerns from community members and labourers, ensuring fair, transparent, and culturally sensitive resolution. This system enables inclusive participation, allowing affected groups to voice their opinions without fear of reprisal. Our dedicated teams handle complaints, appeals, and disputes, strengthening trust and collaboration with our stakeholders.

SOCIAL IMPACT ASSESSMENT

As part of our commitment to strong governance and accountability, we conduct independent third-party impact assessments of our CSR initiatives annually. For the programmes run in FY 2022-23, we engaged an external agency to evaluate five of our key projects in FY 2024-25: **Project Surya, Lighting Lives, Water Conservation, Infrastructure Upgradation, and Water Management.**

The assessment examined **strategic strengths, implementation models and overall performance** of these initiatives, providing actionable insights to enhance future CSR efforts. The findings, offer valuable perspectives to make our programmes more impactful and better aligned with community needs.

	Relevance	Coherence	Effectiveness	Efficiency	Impact	Sustainability
Project Surya, Gujarat	●	●	●	●	●	●
Project Lighting Lives, Rajasthan and Gujarat	●	●	●	●	●	●
Water Conservation project, Rajasthan	●	●	●	●	●	●
Infrastructure upgradation, Uttarakhand	●	●	●	●	●	●
Water management project, Andhra Pradesh	●	●	●	●	●	●

- Meets all expectations
- Meets expectations with scope of improvement
- Meets some expectations with scope of improvement
- Below expectations and critical

Key Partnerships



WAY FORWARD

Empowering 2.5 Million Lives Through Inclusive, Sustainable Development

As we look ahead, our mission is clear, to **transform the lives of 2.5 million individuals across India by fostering inclusive growth, sustainable development, and resilient communities.** Building on a strong foundation of community development and quality-of-life enhancement, we are strategically scaling our efforts to meet this ambitious goal.

Our approach is rooted in **need-based, SDG-aligned, impact-driven interventions** that directly **address local socioeconomic challenges while remaining aligned with India’s broader sustainability and climate resilience agenda.** From expanding access to crucial resources, including renewable energy and clean water, to strengthening education, skilling, and employment pathways, our **CSR initiatives**

are designed to address the pressing challenges facing societal and economic development. Through continuous need assessment, we aim to enhance our existing strategy to significantly **contribute to the Global 2030 Agenda and India’s vision of becoming a developed nation by 2047.**

Recognising that **true transformation extends beyond the life cycle of individual projects,** we acknowledge and reaffirm our commitment that, as we near project-completion, we will implement targeted strategies to ensure self-reliant ecosystems in communities even after project completion. As we advance, our focus remains on empowering communities to thrive independently, laying the groundwork today for a resilient, equitable, and sustainable India of tomorrow.

RELATIONSHIP CAPITAL



ReNew secured USD 100 million investment from British International Investment (BII) to boost its Solar Manufacturing Ecosystem



ReNew collaborates with its partners to provide end to end decarbonisation solutions.

MATERIAL TOPICS IMPACTED



COLLABORATING FOR COLLECTIVE IMPACT

At ReNew, we see every relationship as a catalyst for change. Progress to us is a shared journey shaped by a collaborative ecosystem of **suppliers, regulators, and customers**, each playing a vital role in accelerating India's clean energy leap.

We are actively reshaping our supply chain to be more **sustainable, resilient, and locally anchored**, fostering long-term partnerships with suppliers that align with our ESG standards and innovation goals. Through proactive engagement with **regulatory bodies**, we advocate for policy reforms that support renewable energy growth, energy security, and fair market mechanisms. At the same time, we are enabling **private sector decarbonisation** by offering customised clean energy solutions and **long-term power purchase agreements (PPAs)** that reduce emissions and build future-ready energy portfolios.

Together, these relationships form the foundation of our commitment to building an inclusive and sustainable clean energy ecosystem.

From ethical sourcing and customer-led innovation to engaging with policymakers for transformative change, we are turning conversations into action. Our **strategic collaborations** are amplifying impact, driving alignment with **global frameworks** like the **UN SDGs, SASB, SBTi, and Ecovadis**, and reinforcing **ReNew's** role as a force for good.

SDGs IMPACTED



KEY HIGHLIGHTS OF FY 2024-25

A total of **53 Suppliers** (100% Critical Suppliers) were assessed on ESG criteria, accounting for

91% of our emissions and
73% of our spend

Achieved 69%

revenue increase in 2 years
26 diverse industries, with majority client base positioned in high-impact sectors

Zero

Human Rights Violations Reported

4.8 out of 5

Customer Satisfaction Score

~114%

increase in renewable energy supplied through corporate PPAs in the last 2 years

GRI INDICATORS

- **Suppliers:** GRI 204, 308, 414, 407-409
- **Customers:** GRI 302, 416, 418
- **Policy Advocacy:** GRI 2-28, 415

BRSR PRINCIPLES

Principle 1: Businesses should conduct and govern themselves with Ethics, Transparency and Accountability

Principle 2: Businesses should provide goods and services in a manner that is sustainable and safe

Principle 5: Businesses should respect and promote human rights

Principle 6: Businesses should respect and make efforts to protect and restore the environment

Principle 7: Businesses, when engaging in influencing public and regulatory policy, should do so in a manner that is responsible and transparent

Principle 9: Businesses should engage with and provide value to their consumers in a responsible manner

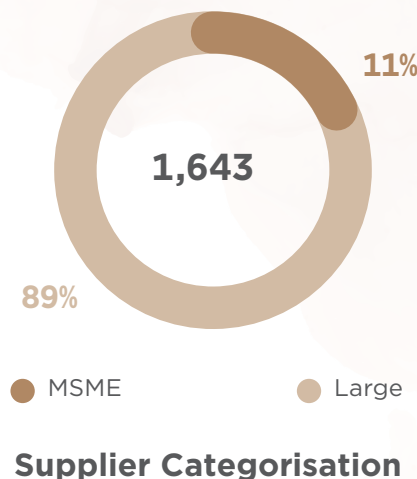
OUR COLLABORATIVE ECOSYSTEM FOR SHARED GROWTH



SUSTAINABLE SUPPLY CHAIN MANAGEMENT

Scaling Impact through Responsible Supply Chains

As the global energy landscape grows increasingly complex and interconnected, driven by geopolitical uncertainties, rising electricity demand, and AI-powered industries, clean energy security is becoming a strategic imperative. However, **this shift goes beyond capacity expansion**, focusing on **securing resilient, sustainable, and indigenised supply chains**. There is a growing call for ethical and transparent practices, responsible sourcing, and accountability on issues such as emissions, labour rights, and human rights. In India, this transformation is particularly pronounced as the nation scales up its clean energy infrastructure.



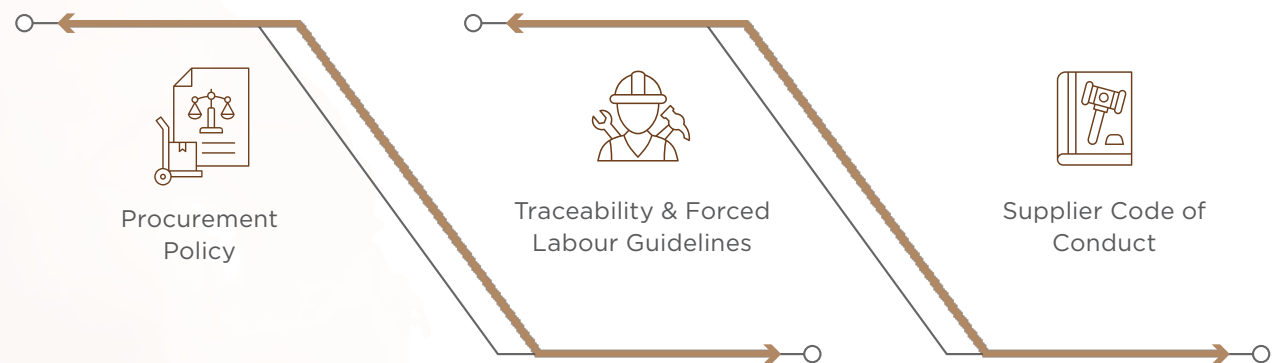
GOVERNANCE MODEL AND STRATEGY FOR SUPPLY CHAIN EXCELLENCE

Structured by Policies, Driven by Strategy

As a frontrunner in responsible clean energy innovations, at ReNew, we have embedded sustainability principles across our supply chain processes. Guiding our procurement decisions and activities, these principles have been effectively translated into on-ground action through our **comprehensive supply chain framework and**

structured policies. These policies are **approved and implemented under the direct oversight of the Board**, driving **operational excellence, enhancing risk management, and ensuring that environmental and social impacts are responsibly managed across all facets of our supply chain**.

Strategic policies enabling a responsible value chain



PROCUREMENT POLICY

Strategic sourcing and procurement

As we continue to grow and expand, the diversity of our operations requires engagement with a broad and evolving network of suppliers across multiple regions, exposing us to emerging and often unidentified risks. To effectively mitigate such risks, we are governed by our robust **procurement policy**. The policy encompasses the entire **Purchase Requisition to Purchase Order (PR to PO) requirements**, ensuring alignment and compliance across all our business units and corporate functions.

Our procurement team works closely with project and technical departments to manage critical functions, including **vendor selection, license**

and permit verification, contractor engagement, payment processing, and performance tracking. For procurement involving significant capital expenditure, our framework mandates a thorough evaluation process focused on quality assurance and value optimisation. Equipment and material selection are aligned with specific project needs through detailed assessments of cost, warranty coverage, degradation rates, insurance, technical support, and supplier credibility. We continuously review our purchasing practices, ensuring alignment with our Supplier Code of Conduct and ESG requirements. alignment with our Supplier Code of Conduct and ESG requirements.



TRACEABILITY & FORCED LABOUR GUIDELINES

Upholding human rights and eliminating forced labour in the supply chain

Acknowledging the risks of labour rights violations, particularly in the Solar Photovoltaic (PV) value chain, we take a proactive approach to ensure ethical sourcing. We **avoid procurement from high-risk regions and require our suppliers to comply with both national and international labour standards, including the core conventions of the International Labour Organisation (ILO)**. To drive transparency, we have implemented a **Traceability and Supply Chain Due Diligence Framework** that:

- Enables traceability of solar PV components:
 - In case of sourcing of **wafers**, up to the **polysilicon** level
 - In case of **direct sourcing of solar modules and cells**, at least up to the **wafer level**
- Embeds traceability clauses in procurement contracts through our **Traceability Addendum**
- Mandates regular supplier declarations affirming adherence to human rights and labour standards

Key Highlights, FY 2024-25

Zero

human rights violations reported

95.1%

traceability achieved in new wafers, solar cells and modules procured

100%

traceability achieved for solar wafers procured



SUSTAINABILITY CODE OF CONDUCT FOR SUPPLIERS

Establishing Responsible Supplier Expectations

The Sustainability Code of Conduct for Suppliers clearly outlining our key expectations from Suppliers in upholding responsible standards. It is **aligned with the Ten Principles of the United Nations Global Compact (UNGC) and reflects leading international practices in sustainable supply chain management. Suppliers and their personnel are expected to fully understand, adopt, and implement** the principles across all aspects of their operations. We actively monitor and ensure compliance with this Code. Our Suppliers are required to confirm their adherence by submitting a declaration alongside each invoice or purchase order, making it a **mandatory requirement for supplier selection**. Any violations identified are promptly communicated to enable timely corrective actions. In cases of serious or repeated breaches, we also reserve the right to terminate the business relationship.

The Code addresses the following key areas:



Compliance with the Law of the Land



Respecting Human and Labour Rights



Transparency in terms of the Origin of Minerals



Adherence to Environmental Compliance



Upholding Corporate Governance and Ethics

Read more about our [Sustainability Code of Conduct for Suppliers](#).



Partnering with ReNew has enabled us to deliver innovative, sustainable solutions in Module Mounting Structures, surpassing conventional alternatives. Their strategic foresight and deep-rooted commitment to sustainability inspire us to continuously raise the bar. ReNew exemplifies how large enterprises can empower SMEs and MSMEs to build a resilient, self-reliant supply chain."

Ramkumar D

Senior Vice President, Hitachi Energy

SUSTAINABLE SUPPLY CHAIN ROADMAP

At ReNew, to steer our supply chain toward greater sustainability and accountability, we have developed a structured roadmap with clearly defined short, medium, and long-term goals. We continuously monitor our progress and benchmark ourselves against this roadmap to unlock new milestones in building a sustainable supply chain.

Short Term (2024-2026)

In Progress

Integrate sustainable supply assessment across all value chains including due diligence of supplier-based information.

Digitise sustainable supply chain framework in procurement systems

Medium Term (2027-2030)

Achieved

Define supplier performance index

In Progress

Critical suppliers to establish emission reduction targets approved by the SBTi

SBTi Net Zero near-term targets:

Decrease absolute Scope 3 GHG emissions from purchased goods and services, capital goods, fuel and energy-related activities, and upstream transportation and distribution by 29.4% by FY 2026-27, from base year FY 2021-22

Conduct an on-site audit of critical suppliers to evaluate their ESG performance

Strategise engagement mechanism based on the key focus areas for the high-risk suppliers

Conduct capacity building related to SBTi Net Zero target setting

As signatory to The First Movers Coalition commitments for purchasers of steel - At least 10% (by volume) of all steel purchased per year will be near-zero emissions (as per First Movers Coalition (FMC) definition) by 2030

Long Term (2040)

In Progress

Reducing absolute Scope 1, 2, and 3 GHG emissions by 90% by 2040 from of a baseline of 2022



ADVANCING ESG EXPECTATIONS IN SUPPLIER RELATIONSHIPS

At ReNew, driven by our ongoing efforts to enhance operational sustainability, we are also enabling a deeper integration of **sustainability considerations** across our value chain . From **initial due diligence and onboarding to contract execution and ongoing performance monitoring through Supply Chain Assessment**, we have implemented

a structured, criteria-driven approach to evaluate supplier practices against key ESG benchmarks. This enables us to evaluate supplier practices against key ESG benchmarks throughout the supplier engagement lifecycle.

Supplier Engagement Lifecycle



Supplier Classification

- At the **contracting stage**, we undertake **ESG-focused risk assessments for selected suppliers**. Based on the outcomes, suppliers are categorised as: **low, medium, and high risk suppliers**.
- **High- and medium-risk suppliers undergo pre-qualification assessments**, while low-risk suppliers may be considered for procurement without a formal tender.



Supplier Pre-Qualification Assessment

- **Potential suppliers** are assessed based on their **technical, financial, and ESG capabilities**. Only those who **meet the defined thresholds are considered for the next stage**.
- Feedback is provided to rejected suppliers, citing reasons for such rejection and the aspects that need to be addressed to access future tenders



Supplier Shortlisting

- **Pre-Qualified suppliers are shortlisted** based on the evaluation of the tender/ quotation submitted. In select cases, sole-source suppliers may be considered, provided ESG performance is verified and capacity-building is planned.



Pre-Award Meetings and Contract Finalisation

- Detailed **pre-award meetings** held to **align expectations** on supply logistics, product quality, timelines, ESG compliance, data sharing, and sustainability clauses.
- For **high-value or high-risk suppliers**, **on-site assessments** are conducted to validate ESG practices, systems, and workforce conditions before contract finalisation.
- Awarding of the contract is **subject to the supplier meeting these expectations**. Suppliers are excluded from contracting if they cannot achieve the minimum requirements.

A total of **53 Suppliers** (100% Critical Suppliers) were assessed on ESG criteria, accounting for **91%** of our emissions and **73%** of our spend

ESG-FOCUSED RISK ASSESSMENT

ESG-focused risk assessments provide a comprehensive set of criteria to evaluate suppliers for potential ESG risks during the contracting stage and to monitor the performance of critical suppliers over time. These assessments cover a range of factors, including but not limited to:

Environment

- Energy and Emission Management
- Water Management
- Waste and wastewater
- Circular Economy and EPR
- Environmental Monitoring and Compliance

H&S Factors

- Fire Safety
- Electrical Safety
- Machine safety
- Emergency preparedness
- Structural Safety
- Management Systems
- Compliance
- Critical Risk Management
- Process safety
- Occupational health

Labor

- Compliance
- Human rights
- Forced Labor/Modern Slavery
- Labor welfare
- Equal opportunity and Fair Treatment
- Grievance Management
- Freedom of Association & Collective bargaining
- Leave and wages
- Working hours
- Leave
- Employee benefits
- Employee Engagement and Training

Governance

- Ethics and integrity
- Anti-bribery and corruption
- Corporate governance
- Enterprise Risk Management (ERM)
- Business Continuity
- Confidentiality and Privacy
- Governance Structure
- Policy Statement
- Supply Chain Traceability

SUSTAINABLE SUPPLY CHAIN ASSESSMENT (SCA)

Reinforcing Supplier ESG Standards

To strengthen our commitment to a responsible and future-ready supply chain, in **FY 2024-25**, we partnered with a **third-party expert to conduct a comprehensive assessment of our critical suppliers**. This assessment, grounded in ESG principles, provided insights into our suppliers' performance and areas of strength and improvement within our supply chain ecosystem. Based on these insights, we organised capacity-building workshops to enhance supplier awareness and capabilities. Dedicated, oversight and guidance from our leadership ensured that the initiative remained aligned with our core values and long-term vision.

(I) Supplier Identification

- Helps prioritise our efforts toward **critical suppliers** that have the most significant impact.
- Identification of critical suppliers for each business category is achieved through **initial screening**, based on the following criteria:



Commodity-specific risk
Type of product/ service procured



Business relevance and value spent



Country-specific risk and sector-specific risk

- Locations that are considered high-risk owing to sectoral issues
- Conflict countries



ESG Parameters
Please refer to ESG focused risk assessment in the previous page

SCA Highlights, FY 2024-25

53
Suppliers identified as critical

60%
Increase in critical suppliers assessed, compared to FY 2023-24

OF THE TOTAL CRITICAL SUPPLIERS ASSESSED



(II) ESG Assessment

- Evaluates supplier's alignment with ReNew's ESG standards
- Desk-based assessment of the ESG practices of critical suppliers is done using a **structured Supplier Assessment Questionnaire (SAQ)** that includes key ESG topics as outlined in our ESG-focused risk assessment framework and seeks evidence wherever required (certifications, ratings, documentation, etc.)

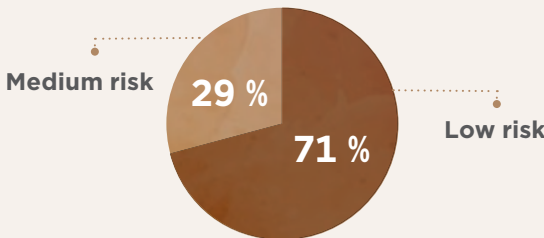
SCA Highlights, FY 2024-25

100%
of SAQ response rate achieved

(III) Risk Assessment

- Enables **categorisation** of suppliers assessed as **high, medium, and low risk** suppliers
- Risk assessment of critical suppliers is based on meticulous **evaluation of SAQ** responses and allocation of ESG risk scores thereupon.

SCA Highlights, FY 2024-25



No supplier classified in the high-risk category

(IV) Corrective Action Plan

- The process ensures continuous improvement and accountability in ESG performance.
- Post-assessment, **Corrective Action Plans (CAPs)** are collaboratively developed with suppliers to **address identified ESG gaps**. These plans are **reviewed for completeness and quality** and must be **executed within defined timelines**.

SCA Highlights, FY 2024-25

Based on the assessment, no supplier has been assessed with substantial actual/potential negative impacts which required a corrective action/improvement plan. Results of our assessment are that 23% of our critical suppliers have set their Net Zero targets, and 10% water positive reflecting strong alignment with our sustainability goals.

(V) Supplier Capacity Building

- Foster improvements in suppliers' sustainability practices in alignment with our broader ESG goals through knowledge sharing.
- This reporting year, curated training sessions focused on critical topics such as **climate risk, circular economy, human rights, ESG data management, and evolving global regulations** were organised.
- Additionally, we shared **industry best practices and case studies** to help suppliers benchmark themselves against peers and industry standards and apply these learnings on the ground.

FY 2024-25 Highlights

100%
critical suppliers provided capacity building

WAY FORWARD

Our future roadmap envisions extending Supply Chain Assessments to all suppliers, fostering ESG integration beyond critical partnerships. We will enhance transparency across the entire value chain, embedding sustainability into every process. By supporting suppliers on their Net Zero journey through collaboration and capacity building, we aim to accelerate collective impact. Recognising and celebrating supplier excellence will be key to driving continuous improvement and shared success.

EMPOWERING CUSTOMERS ON THE PATH TO NET ZERO

Driving Corporate Decarbonisation Through Strategic Clean Energy Partnerships

India has emerged as one of the **world's fastest-growing economic forces**, driven by a fundamental transformation in industrial capabilities and business ambition. Rapid industrial advancement, coupled with a sharp surge in power demand, positions the private sector as a **major contributor to the country's overall GHG emissions**. Recognising this challenge and in linewith the nation's climate actions, a growing wave of Indian companies has committed to Net Zero goals. Against this backdrop, corporate renewable **Power Purchase Agreements (PPAs)** have taken the centre stage as a definitive solution, enabling businesses to accelerate India's shift toward a low-carbon economy while securing business growth.

Accelerating Net Zero in the Private Sector Making an Impact Where It Counts

ReNew stands at the forefront of this transformation. With our innovative power purchase agreements, we have positioned ourselves **as the trusted partner for businesses committed to achieving their climate ambitions**. As one of the largest players in the country's C&I renewable energy market, we are enabling corporations to decarbonise the grid and achieve their Net Zero commitments.

Our **dedicated business vertical** focused on **clean energy solutions for corporate clients** enables us to tap into emerging opportunities, both through **direct tenders and partnerships**, with a particular focus on channel-driven business development. Our deep expertise in **group captive and open access models**, **combined with our ability to deliver firm and reliable clean power**, allows us to meet a wide range of customers, positioning us for leadership in a fast-expanding market.

Bifurcation of Contracted Capacity (in GW)

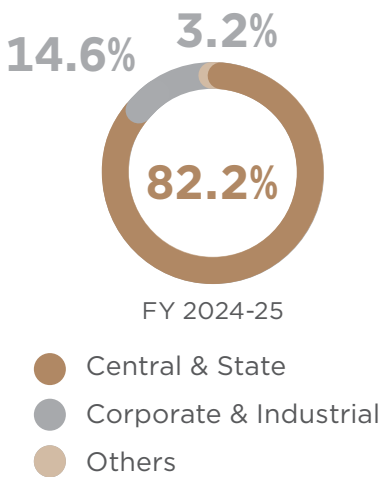
2.5 GW
Corporate & Industrial

9.2 GW
Centre

5 GW
State

0.56 GW
Others

Bifurcation of Contracted Capacity

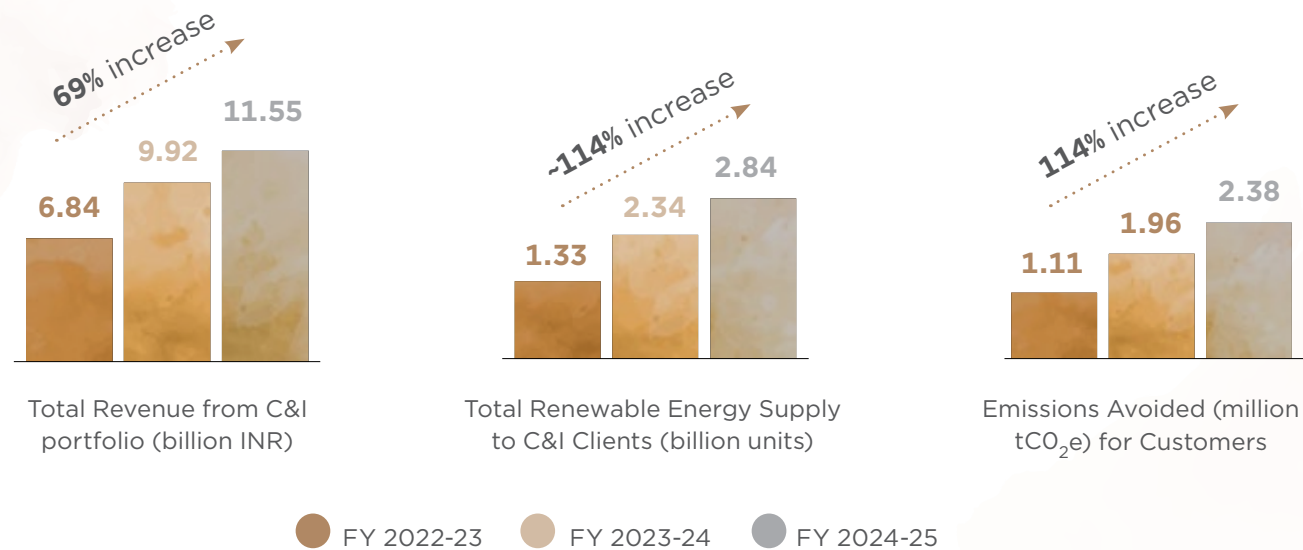


As of March 31, 2025, **14.6%** of our **total contracted capacity serves the corporate and industrial segment**, including prestigious partners like the **Microsoft, Amazon, DCM Shriram, Grasim** etc. where we deliver tailored decarbonisation solutions to meet enterprise sustainability goals. The **82.2%** represents our **central and state utilities** like the **Solar Energy Corporation of India (SECI), National Thermal Power Corporation (NTPC), and PTC India**.

Aligning business growth with climate responsibility

Our strong and growing presence in the PPA market is a testament to the trust we have earned from a diverse and expanding portfolio of corporate clients. This performance reinforces ReNew's position as a partner of choice for businesses seeking reliable, clean energy solutions. We view this not just as a business achievement, but as a meaningful opportunity to accelerate India's journey toward Net Zero. With over 50% of our clients operating in carbon-intensive sectors, our solutions are driving purposeful impact, delivering both environmental and economic returns where they matter most.

- With a growing portfolio of **80 active C&I customers** across **26 diverse industry segments**, we are proud to be a trusted partner in India's clean energy transition.
- Notably, **51%** of our **C&I clients** operate in carbon-intensive sectors, highlighting our strategic commitment to driving decarbonisation where it is most urgently needed.
- Additionally, **~37%** of our clients have committed to **Net Zero**



- Recorded a **69%** increase in revenue from PPA in the last two years, with **16% increase from previous year**
- ~114%** increase in renewable energy supplied through corporate PPAs in the last two years and thereby emissions avoided

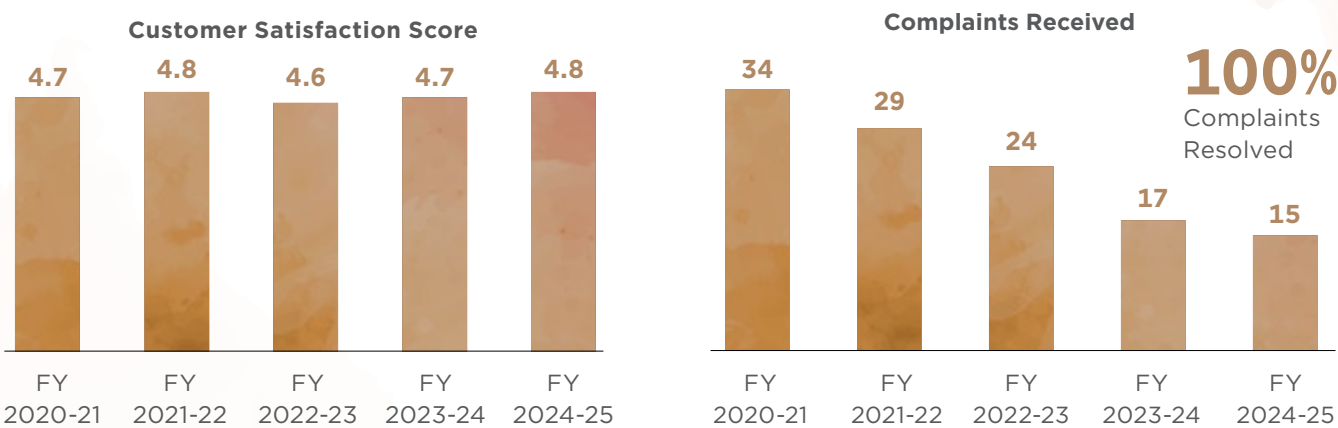
Rated by Customers, Driven in Excellence

At the core of our business lies an unwavering commitment to customer satisfaction that goes beyond just our products and collaborations. We place immense value on delivering exceptional quality service and continuously enhancing our offerings. This dedication is evident in the consistently high feedback we receive, with our Customer Satisfaction Surveys showing an **outstanding average rating of 4.8 out of 5**. This reinforces our deep-rooted customer-centric approach. Our consistent upward trend in customer ratings reflects our commitment to delivering customer-centric, high-quality service. These ratings are based on key performance attributes, including:

- Overall quality of services
- Professionalism of ReNew's representatives
- Knowledge level of ReNew's representatives
- Timely response to queries
- Reachability of ReNew's representatives

High Client Confidence Demonstrated Through Repeat Partnerships

Long-term PPA model ensures sustained relationships, with businesses like Amazon, Microsoft, DCM Shriram and Grasim returning for additional renewable energy solutions.



Our effective customer relationship management is reflected in the steadily decreasing trend of customer complaints and the absence of any unresolved issues. The limited number of concerns we do receive are primarily related to billing and are resolved promptly and transparently. This demonstrates our commitment to proactive communication, operational excellence, and building long-term trust with our clients.



ReNew has been a trusted partner in Mahindra's clean energy transition, offering reliable and scalable solutions. Their technical expertise and collaborative approach have greatly supported our climate goals. The company's insights on regulatory and technical aspects help us stay ahead in our decarbonisation strategy. We value their consistent delivery and commitment to sustainability."

Kiran Sarkar
Head – Sustainability, Mahindra – Auto Farm Sector

Engagement Touchpoints Customer Relationship Management

Our newly launched CRM platform is purpose-built to elevate how we manage customer relationships, integrating three core functionalities designed to boost both efficiency and client satisfaction:



Daily Energy Generation Monitoring

This feature enables stakeholders to monitor daily energy generation with near real-time data and gather necessary insights. This helps them track performance and identify deviations promptly thereby ensuring operational efficiency.



Customer Feedback and Concern Management

This feature enables customers to raise grievances regarding projects as well as provide feedback on project management which allows us to proactively refine our services and prioritise quick and effective resolution of queries and concerns, fostering clear communication and strengthening trust



Invoicing and Billing

This system which is currently under development will provide a clear and up-to-date view of customer's billing status, making it easier to track invoices, monitor due dates and facilitate timely payments resulting in enhanced transparency and better coordination between customer and business teams.

These advancements represent a significant leap in our pursuit of operational excellence and exceptional customer service. As one of India's leading C&I renewable energy providers, our rapid growth underscores our steadfast commitment to delivering scalable, dependable, and innovative solutions. Together, we are driving the transition toward a more sustainable future, empowering our customers every step of the way.

WAY FORWARD

Looking ahead, we aim to empower many more Indian companies in their Net Zero journey through strategic PPAs. Our focus is on expanding access to clean energy for private enterprises across sectors. We will continue innovating our corporate solutions to meet evolving sustainability needs. Tailored offerings will ensure every partner receives impactful, future-ready energy support.

CONTRIBUTING TO INDIA'S ENERGY TRANSITION JOURNEY

Partnering with Regulators for Sustainable Progress

The global regulatory landscape for clean energy is undergoing a profound transformation. Governments are increasingly allocating long-term investment support to clean energy. In 2025, global investment in clean energy is projected to reach a record USD 2.2 trillion. Across major economies, policy frameworks are being strengthened to accelerate the clean energy transition and achieve Net Zero commitments. The global regulatory landscape for clean energy is undergoing a profound transformation. Governments are increasingly allocating long-term investment support to clean energy. In 2025, global investment in clean energy is projected to reach a record USD 2.2 trillion. Across major economies, policy frameworks are being strengthened to accelerate the clean energy transition and achieve Net Zero commitments.

Key Trends Shaping the Global Clean Energy Policy Landscape

- **~150 countries**, accounting for nearly **95% of GHG emissions**, introduced new, more ambitious climate commitments, leading about **50 governments to tighten energy efficiency, renewables and emissions standards since 2020**.
- Diverse policy measures, from **direct incentives to trade policy**, have been implemented to **secure clean energy supply chains**. Recent policies have **proposed requirements or targets for minimum shares of domestic manufacturing**.
- Since 2020, a promising growth is evident in trade measures relating to clean technology supply chains, with **~200 trade policies** targeting clean energy technology implemented.
- **35 countries**, representing one-fifth of energy-sector CO₂ emissions, have passed **new energy regulations**, since 2023.

Source: IEA's State of Energy Policy Report, 2024

Key Policies Shaping the Indian Clean Energy Landscape

- **National Electricity Plan (2023)**, which outlines a strategic roadmap for achieving 50% non-fossil capacity by 2030.
- **Production Linked Incentive (PLI) Scheme** for Solar PV Manufacturing to boost domestic renewable manufacturing.
- **National Framework for Promoting Energy Storage** to ensure a constant supply of renewable energy, reduce emissions, and lower energy costs by incentivising ESS deployment.
- **The National Green Hydrogen Mission** aimed at positioning India as a global hub for green hydrogen production.
- **Wind-Solar Hybrid Policy** to promote efficient resource utilisation and grid stability.

In addition, regulatory instruments like the **Green Open Access Rules, 2022**, which simplify access to green power for smaller consumers, and the **Renewable Energy Tariff Regulations, 2024**, which provide clarity and confidence for investors, are catalysing the large-scale deployment of clean energy solutions and reinforcing India's leadership in the global energy transition.

Policy Advocacy at ReNew

As India's Net Zero ambitions have expanded, from addressing foundational operational barriers to leading the charge in integrated, reliable clean energy solutions, at ReNew, we have progressed in lockstep with the nation's aspirations. This shared journey can be traced through three transformative phases, each marking a significant milestone in both the country's and our own clean energy narrative:

2011-2015

Navigating Operational Challenges Amidst Policy Uncertainty

- The sector faced fragmented policies, with **ambitious national targets** but inconsistent state-level implementation.
- ReNew focused on **resolving operational issues**, reflecting the broader sectoral challenges - policy uncertainty, regulatory delays, and infrastructure bottlenecks.

2015-2019

Proactive Risk Management and Alignment with National Vision

- Following the Paris Agreement, India deepened its climate commitment. The sector saw increased synergy between central and state policies, regulatory reforms, and incentives for large-scale renewable projects.
- We aligned our strategy with national goals, **assessing sectoral risks and shaping policy** dialogue. Supported the creation of **demand profiles** for firm and dispatchable renewable power.

2019 onwards

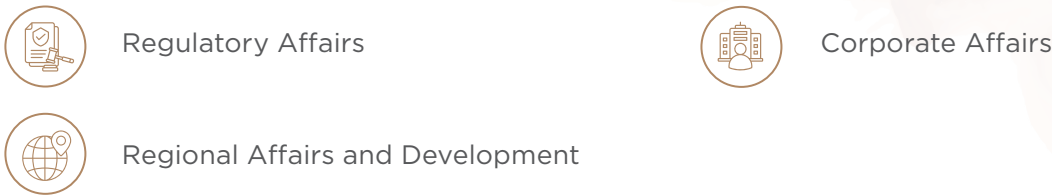
Strategic Leadership and Ecosystem Advocacy

- India committed to Net Zero by 2070, backed by 500 GW of non-fossil power capacity by 2030. Key regulatory reforms were introduced to catalyse this transition, strengthen domestic manufacturing for an Atmanirbhar Bharat, **reduce import reliance**, and position India as a global leader.
- Led policy interventions to not only further the Company's vision, but strengthen India's renewable energy ecosystem. Our key milestones include the country's first **Round-the-Clock (RTC) power** tender and the commissioning of the first ISTS hybrid renewable energy project, both setting benchmarks for reliable, dispatchable clean energy. In line with the PLI scheme and India's vision of 'Aatmanirbhar Bharat,' we made a strategic backward integration into solar manufacturing. Our manufacturing plant in **Jaipur** is one of the first plants to be commissioned under the **PLI program**.

Currently, we are a part of various prestigious global and national forums, advocating policies and reforms to accelerate the clean energy transition. Explore our strategic global and national partnerships on [page 30](#) of this Report.

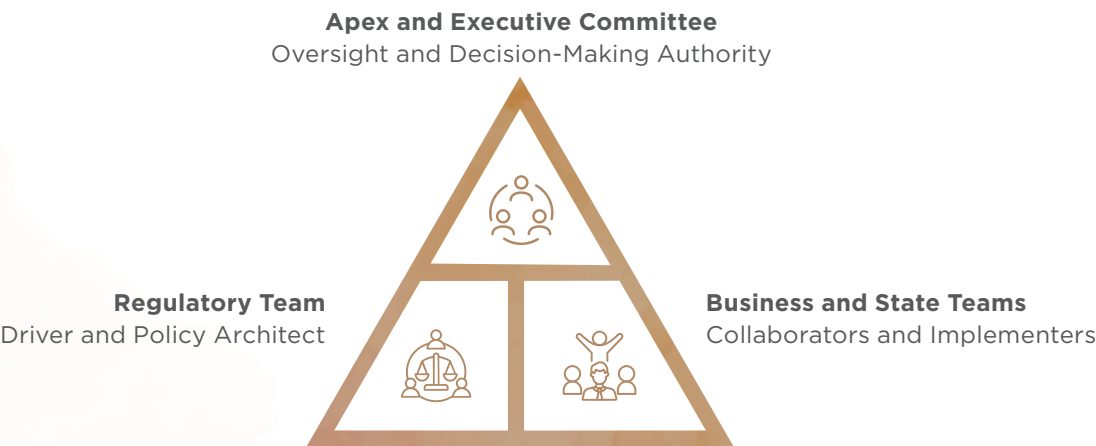
Driving Proactive Policy Action Through Structured Governance

To institutionalise our policy advocacy efforts and drive coordinated and proactive actions in policy engagement, we have established a dedicated **Strategic Business Development (SBD) & Policy Affairs Department**, which integrates the following key functions:



Execution Framework of SBD & Policy Affairs
Strategic Governance for Climate-Focused Policy Advocacy

Our public policy engagement is guided by a collaborative, multi-tiered governance framework with clearly defined accountabilities extending to the executive level. **The highest oversight is provided by Apex Committee and Executive Committee to ensure alignment with global, national, and organisational climate ambitions, including alignment with the goals of the Paris Agreement.**



Opportunity Identification and Assessment

- The regulatory team closely monitors the clean energy policy and business landscape to **identify emerging opportunities** for engagement with Central and State Governments.
- Leveraging the expertise of Business Units (BUs) and state teams, the regulatory team seeks **validation of identified opportunities** through contextual understanding and on-ground perspectives.

Development and Dissemination of Strategic Proposals

- Synthesising inputs from internal stakeholders (BU and state units), the regulatory team prepares **strategic proposals** or solutions for review and endorsement by **Apex and Executive Committee** members to identify and address any potential misalignment with the goals of the Paris Agreement and our internal Net Zero targets. At this stage, proposals that are not aligned are thoughtfully set aside.
- Followed by leadership approval, the regulatory team diligently prepares and formally **submits comprehensive proposals to the relevant regulatory and governmental authorities**, while ensuring sustained engagement through collaborative dialogue.

Execution Oversight

- Following regulatory approval, the regulatory team ensures seamless implementation of the proposed strategy by the respective Business Units and state teams, ensuring alignment with defined objectives and timelines.

Progress Reporting and Management Updates

- A tailored update is offered to the senior management and key stakeholders (APCOM and EXECOM) through comprehensive reports or updates on the status of implementation by the regulatory team.

Creating Meaningful Outcomes through Focused Actions

Central-Level Focus Areas

- Policy and Regulatory Inputs
- Business Impact Analysis
- Policy Feedback
- Bid Document Review
- Industry Mobilisation

State-Level Focus Areas

- Investment Facilitation
- Policy Feedback
- Stakeholder Engagement
- Petition Filing



One Team. One Vision. One Purpose.
One Future

SETTING NEW BENCHMARKS IN CLEAN ENERGY ACCESSIBILITY

India is at a pivotal juncture in its energy landscape. **With a population of over 1.4 billion and a rapidly expanding economy- now the fourth largest in the world, the country’s electricity demand is forecasted to grow at an average 6.3% annually over the next three years.** To achieve Net Zero emissions by 2070, India recognises that the bulk of this decade’s rising energy demand must already be met through low-carbon energy solutions. However, the intermittency issues associated with renewable energy present significant challenges to grid stability and reliable power supply, often resulting in increased dependence on conventional generation sources, thereby impeding decarbonisation objectives.

ReNew’s Innovative Response: Hybrid Renewable Energy with Battery Storage

Recognising these challenges, ReNew undertook a forward-looking approach by **integrating Battery Energy Storage Systems (BESS) with solar and wind power to create a hybrid renewable energy solution.** This integration enables the storage of surplus renewable energy during periods of high generation and its dispatch during peak demand or low generation intervals, thereby enabling dispatchable, round-the-clock clean power supply. This vision came to life at **Koppal, Karnataka**, where we commissioned **India’s first Inter-State Transmission System (ISTS) – Connected Hybrid Renewable Energy Facility.**

The 300 MW facility comprises

- An **81 MW** solar power plant,
- A **322 MW** wind power plant,
- A **150 MWh** battery energy storage system.

However, the journey toward innovation often demands navigating uncharted territory, where each challenge becomes a stepping-stone to progress.

Addressing Unprecedented Technical and Regulatory Challenges through Strategic Execution

As the first project of its kind, the Koppal hybrid facility faced a steep learning curve. It confronted and overcame a series of novel technical and regulatory hurdles through a proactive, collaborative, and systems-driven approach to **de-risk the project and set a precedent for future hybrid installations:**

- **Strategic Regulatory Coordination:** Collaborated with Southern Regional Load Despatch Centre (SRLDC) and OEMs to navigate regulatory ambiguity and evolving hybrid norms through real-time feedback loops and iterative refinement of technical documentation
- **On-Site Validation for Compliance:** Enabled full transparency by facilitating SRLDC-led validation of simulation data against actual system performance, securing permits for power evacuation
- **Technical Adaptation & System Upgrades:** Invested in advanced system upgrades and real-time data analytics to meet operational expectations and ensure long-term reliability

This integrated strategy not only enabled successful project execution but also emerged as a strategic blueprint for India’s clean energy future, unlocking the potential of integrated, dispatchable renewable power at scale.

Results That Resonate

India’s first

300 GW

ISTS-connected hybrid renewable energy project, delivering

900 MWh

of power over a 6-hour window

80%

energy availability for

150 MW

across demand periods, meeting DISCOMs’ need for predictable, dispatchable renewable power

Demonstrated a marked improvement in reliability and load-balancing compared to standalone solar or wind assets

Informed and influenced policy development, equipping RLDCs with technical learnings that will shape future hybrid grid codes and regulatory standards

Enabled greater investor and DISCOM confidence in the feasibility of hybrid + storage models



Battery Energy Storage Systems (BESS) store hours of energy, boosting grid stability and renewable integration, Koppal, Karnataka

WAY FORWARD

As India enters a pivotal decade for climate action, we are committed to supporting national and global goals through strategic policy advocacy and technology-driven solutions. We are actively advancing firm, dispatchable renewable energy via investments in green hydrogen, pumped hydro, and smart grid innovations, while contributing to the development of carbon markets to unlock climate finance. In alignment with the PLI scheme and Aatmanirbhar Bharat, we are strengthening domestic manufacturing capabilities to enhance energy self-sufficiency. Our engagement with regulatory bodies, industry coalitions, and research institutions is focused on co-creating progressive policies that address energy access, climate resilience, and inclusive growth, ensuring that clean energy transition is both equitable and economically robust.